



Race Hotel
 Hilton Garden
 600 Tampa Oaks Blvd TT
 813-342-5000

\$1,000 Cash + Prizes + Bonuses

March 13th, 2010

Squiggy Classic Individual and Team Time Trials



Residence Inn
 13420 N.
 Telecom
 Parkway
 813-972-4400



Part of the Squiggy Classic

www.squiggyclassic.org

Annual Squiggy Classic Individual Time Trial (7 mile loop)

March 13 – Sunrise Start (pre-registration only). Riders will go off in 1-minute intervals. Start times will be on floridacycling.com. Race order as listed. **Pre-Registration Active.com until March 12 @3pm.**

*****There is no onsite registration for this event. Number pickup day of event only*****

Please note all categories will be eligible for the Florida Points Series.

See Active @ http://www.active.com/event_detail.cfm?event_id=1834024 to register online.

Category	Distance	Fee	Prizes
Juniors 10-12,13-14 and 15-16, 17-18	7 miles	\$15	3 places
Masters 45+/55+	7 miles	\$20	3 places
Masters 35+	7 miles	\$20	3 places
Women 1,2,3/Cat4	7 miles	\$20/\$20	3 places
Cat 5	7 miles	\$20	3 places
Cat 3	7 miles	\$25	\$200/3
Cat 4	7 miles	\$20	3 places
Pro 1,2	7 miles	\$25	\$200/3

Squiggy Classic Team Time Trial

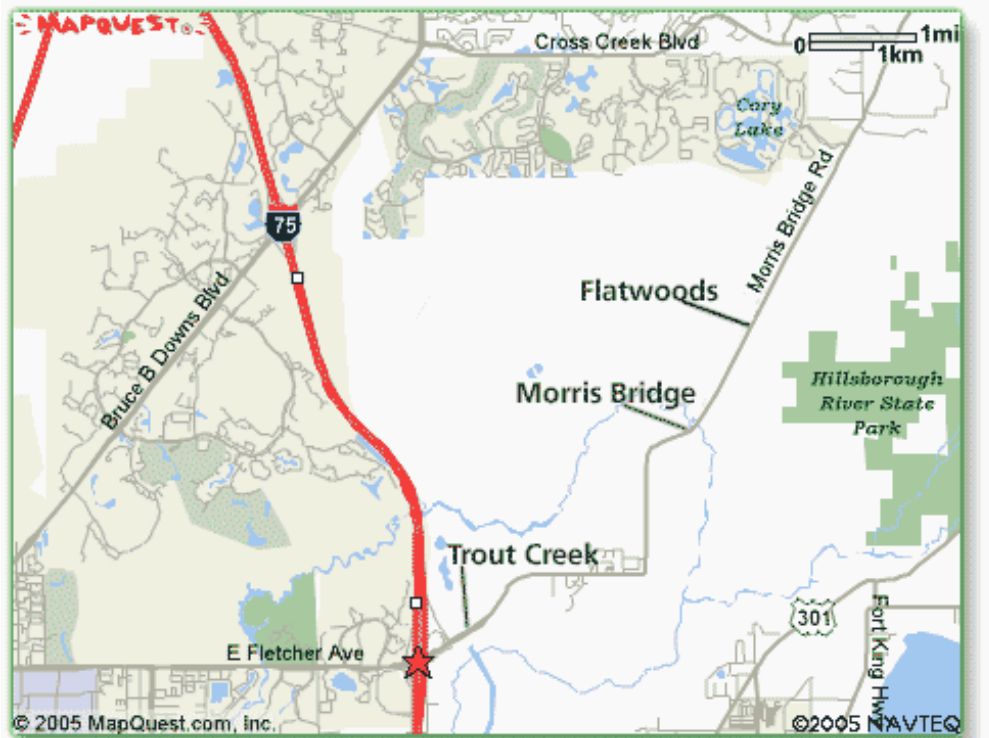
March 13 – Starts at approx. 2 pm. Onsite registration opens at noon and ends at 1pm. Start times will be posted at 1:45pm. Men's teams must consist of 3-4 riders (timed on the 3rd finishing rider). Women's teams must have 2-4 riders (times on the 2nd finishing rider). Teams go off at 2 min intervals. Min. number of teams for prize list 4 each category (100% payback to listed prize).

Categories	Distance	Fee	Prizes
Juniors	7 miles	\$50	Trophy
Pro 1,2,3	7 miles	\$60	\$200/3
Women	7 miles	\$50	Trophy
Masters 30+	7 miles	\$60	\$200/3
Cat 3,4,5	7 miles	\$60	\$200/3

Please use USCF Standard Release and mail with payment to: BBC P.O. Box 2114 Lutz, Florida 33548 or register with Active.com Late fee after March 10 - \$10.

*******Bonus Cash for fastest rider under 14 minutes \$200 – fastest Master rider, fastest Junior and fastest Women \$50 each*******

Time Trial Location



Individual TT By way of I-75:

From the North get off at exit 266 and follow the ramp to Fletcher Ave. Turn left at Fletcher Ave which turns into Morris Bridge Road. Follow Morris Bridge for approx. 5 miles to the north east to the entrance of Flatwoods Park.

FOR INFORMATION 813-949-1593, EMAIL BACKBAY1@YAHOO.COM

Races Held Under USA Cycling Permit (#Pending) All USA Cycling Rules Apply.
Races Rain or Shine. Promoter Reserves the Right to Cancel/Combine Classes or Purses
based on Pre-registration. No Refunds