



Race Hotel  
Hilton Garden  
600 Tampa Oaks Blvd TT  
813-342-5000

# \$1,200 CASH + Prizes

## March 14th, 2009

### Squiggy Classic Individual and Team Time Trials



Residence Inn  
13420 N.  
Telecom  
Parkway  
813-972-4400



Part of the Squiggy Classic

[www.squiggyclassic.org](http://www.squiggyclassic.org)

### Annual Squiggy Classic Individual Time Trial (7 mile loop)

March 14 - 7:30 am (pre-registration only). Riders will go off in 1-minute intervals. Start times will be posted Fri. after 9pm on [www.floridacycling.com](http://www.floridacycling.com). Race order as listed. **Pre-Registration Active.com until March 13. Onsite Registration at Flatwoods Park on Friday night 7 to 8pm only.**

**Please note all categories will be eligible for the Florida Points Series.**

See Active @ [www.active.com/event\\_detail.cfm?event\\_id=1691951](http://www.active.com/event_detail.cfm?event_id=1691951) to register online.

Category	Distance	Fee	Prizes
Juniors 10-12,13-14 and 15-16, 17-18	7 miles	Free	3 places
Masters 45+/55+	7 miles	\$20	3 places
Masters 35+	7 miles	\$20	3 places
Women 1,2,3/Cat4	7 miles	\$20/\$15	3 places
Cat 5	7 miles	\$20	3 places
Cat 3	7 miles	\$20	\$150/3
Cat 4	7 miles	\$20	3 places
Pro 1,2	7 miles	\$25	\$200/5

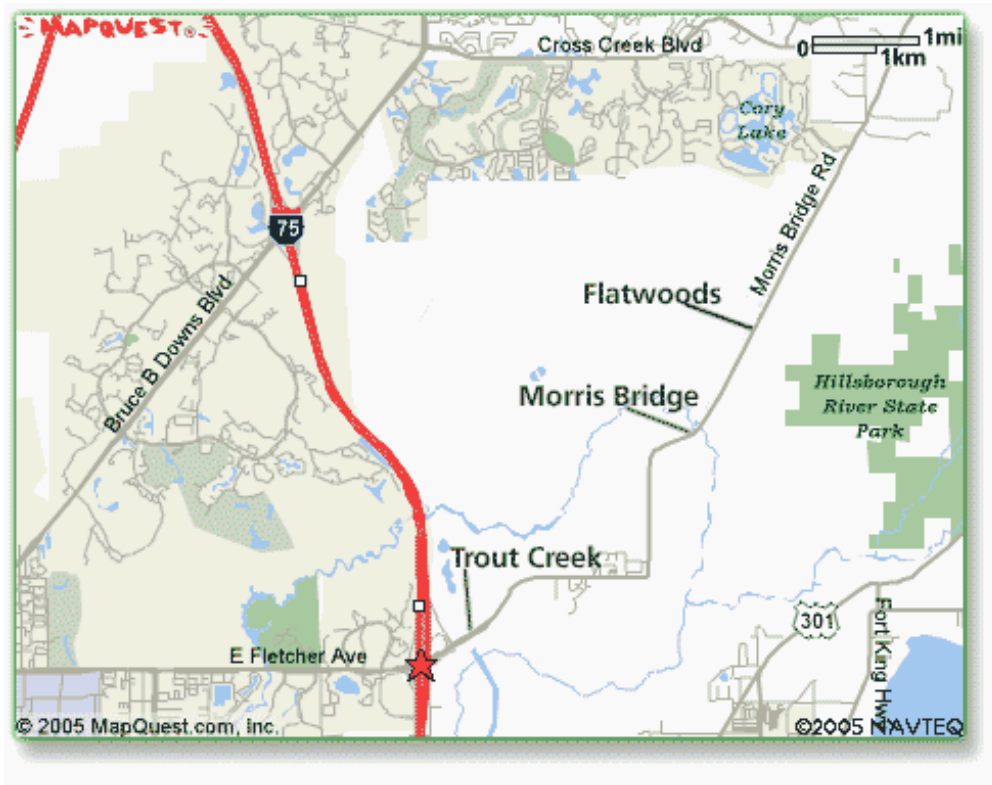
### Squiggy Classic Team Time Trial (9 miles)

March 14 – Starts at approx. 2 pm. Onsite registration opens at noon and ends at 1pm. Start times will be posted at 1:45pm. Men’s teams must consist of 3-4 riders (timed on the 3rd finishing rider). Women’s teams must have 2-4 riders (times on the 2nd finishing rider). Teams go off at 2 min intervals. Min. number of teams for prize list 5 each category (100% payback to listed prize).

Categories	Distance	Fee	Prizes
Juniors	9 miles	\$40	3 places
Pro 1,2,3	9 miles	\$50	\$250/4
Women	9 miles	\$40	\$200/3
Masters 30+	9 miles	\$40	\$200/3
Cat 3,4,5	9 miles	\$40	\$200/3

**Please use USCF Standard Release and mail with payment to: BBC P.O. Box 2114  
Lutz, Florida 33548 or register with Active.com Late fee after March 10 - \$10.**

## Time Trial Location



### **Individual TT By way of I-75:**

From the North get off at exit 266 and follow the ramp to Fletcher Ave. Turn left at Fletcher Ave which turns into Morris Bridge Road. Follow Morris Bridge for approx. 5 miles to the north east to the entrance of Flatwoods Park.

**FOR INFORMATION 813-949-1593, EMAIL [BACKBAY1@YAHOO.COM](mailto:BACKBAY1@YAHOO.COM)**

Races Held Under USA Cycling Permit (#Pending) All USA Cycling Rules Apply.  
Races Rain or Shine. Promoter Reserves the Right to Cancel/Combine Classes or Purses  
based on Pre-registration. No Refunds